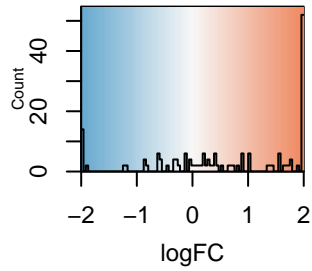


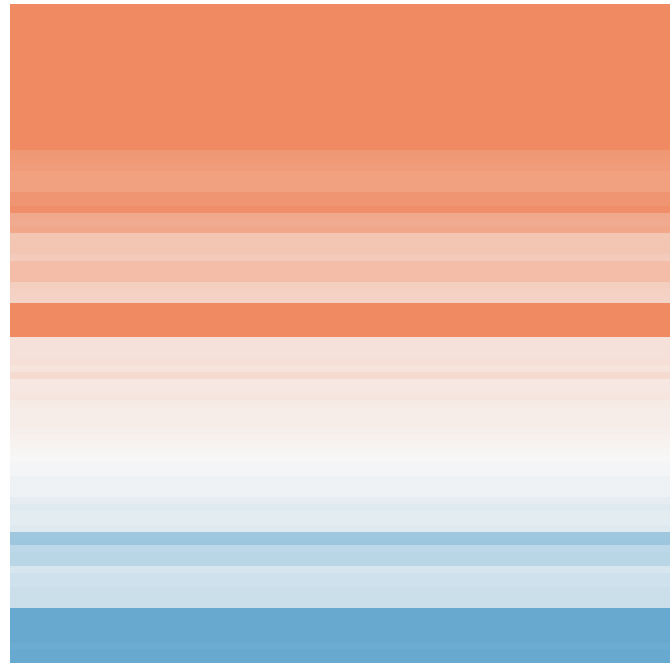
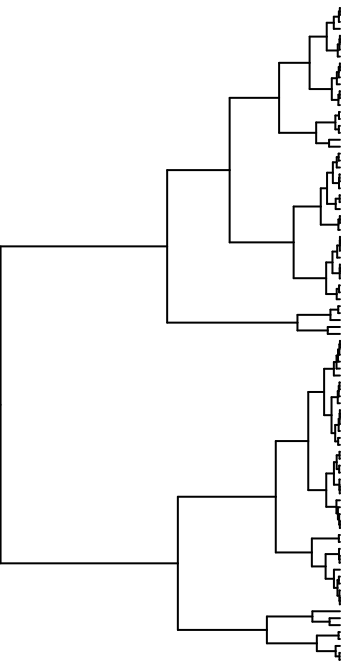
Color Key
and Histogram



O_GLYCOSAMINOGLYCAN_BINDING(logFC)

Significance of DE

- █ FDR <= 0.05
- █ FDR > 0.05



- Bgn
- Vin
- Cdc3
- Tgfr3
- Ccl1
- Dgat2
- Fat1
- Vcll1
- Lem4
- Lem1
- Pfrr5
- Pofa2
- Cd3a1
- Ahr1
- Cpl1
- Smad3
- Ccl4a1
- Igf1
- Ccl4a2
- Mch
- Ccl4b
- Sirt6
- 160010H20Rik
- Corf1a1
- Ccl3a2
- Ser1
- Serpinc2
- Ccl7
- Hba
- Fgf11
- Nip
- Ctnd1
- Serpinc5
- Naw1
- Tnfr2
- Lym
- Tfr3
- Nesf1
- Stab1
- Pip3
- Cd3a1
- Dgat2
- Emad
- Ccl1a1
- Mg
- Bmi2
- Fgf7
- Clec3b
- Apo1
- Gram2
- Tnfr2
- Lym
- Ccl4
- Gm2
- Apo1
- Zfp207
- Tnfr4
- Ccl1
- 1000117J02Rik
- Cd57
- Lpd3
- Lgfr3
- Vesg
- LCC100034251
- Dgat1b1
- Tgfr2
- Ccl1
- Hsp
- AU40377
- Ccl1
- Hsp90
- 453056M07Rik
- BC019531
- Smad2
- Pip3
- Dfr
- ALUJ2871
- Adggrs15
- Rpl22
- Hsp17b12
- Ang4
- Ccl1
- Lgfr3
- Smad1
- Hmox1
- Vesg2
- Apo1