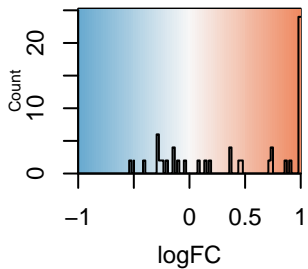
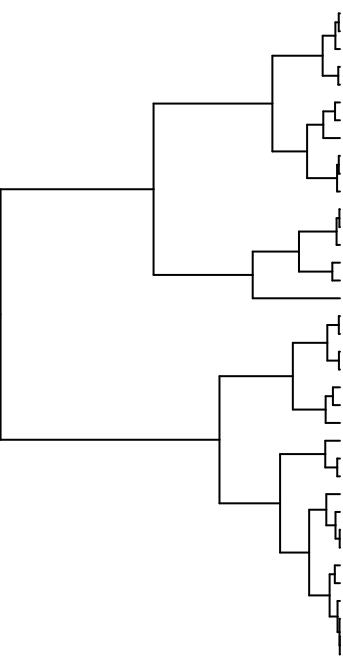
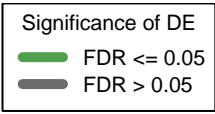


Color Key  
and Histogram



# RINSIC\_APOPTOTIC\_SIGNALING\_PATHWAY\_IN\_ABSENCE\_OF\_LIGAND(logF



- Srpx
- Col16a1
- Tnf
- Col7a1
- Col4a1
- Col5a2
- Col4a2
- Fgf10
- Nrg1
- Dapk1
- Col4a6
- Col3a1
- Fas
- Col5a1
- Il7
- Dapk2
- Bcl2
- Akt3
- Mcl1
- Snai3
- Cxcl4
- Src
- Ripk1
- Hspa5
- Hspa1a
- Ppp2r1b
- Dapk3
- Zc3hc1
- Prss25
- Hspa9
- Bax
- Inhba
- Ctnna1
- Akt1
- Ppp1ca
- Hspa8
- Wwox